



SOU789
Available

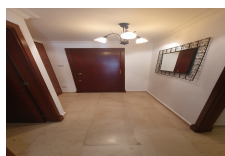
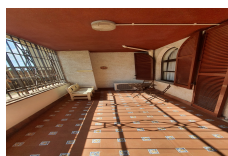
ROSIA PLAZA

£1,600 pcm



FEATURES

- 2 Bedrooms
- 1 Bathrooms
- Fully Furnished
- Private Parking
- Communal Garden



Stunning two bedroom, one bathroom apartment situated on the ground floor within this popular development, Rosia Plaza. With a south facing aspect, this property benefits from a great terrace looking towards Rosia Plaza courtyard, the perfect place to spend the summer months with friends and family. The spacious living room includes a chaise longue sofa and a separate dining area, which leads on to a large kitchen with ample storage space. Both bedrooms benefit from fitted wardrobes and have ample storage space, the main bedroom is particularly spacious and the second bedroom being slightly smaller, would be perfect for a young child or as a study. This property has air-conditioning throughout and a private parking bay within the building. Ideal for a young family or couple. Viewing is highly recommended! Please contact +350 200 51010 or info@bmigroup.gi to arrange a viewing!

Interior Size: N/A
Exterior Size: N/A
Plot Area: N/A
Furnishing: Fully Furnished

Rates: TBC
Service Charges: TBC
Price per sqm: £0