



SOU796  
Available

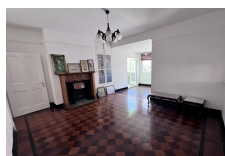
## SCUD HILL

£625,000



### FEATURES

- 3 Bedrooms
- 2 Bathrooms
- Fireplace
- High ceilings
- Partly Furnished
- Parking Facility



This remarkable three-bedroom penthouse apartment in the sunny South District is a true gem. Nestled near St. Joseph's School and the upcoming Eroski supermarket, it promises convenience and comfort. Boasting abundant charm, the residence showcases three spacious bedrooms with picturesque bay views, a generously sized fully equipped kitchen with two pantries, a bathroom, separate cloakroom, and a welcoming living/dining area opening onto a terrace with stunning vistas of the Rock and sea. Highlights include three functional fireplaces and original cork flooring. Situated within a small building, the property boasts minimal overheads, just two neighboring units, a communal patio, and residential car parking space. For a personal viewing experience, don't hesitate to reach out to us at BMI Group.

|                       |                   |
|-----------------------|-------------------|
| <b>Interior Size:</b> | 115m <sup>2</sup> |
| <b>Exterior Size:</b> | 8m <sup>2</sup>   |
| <b>Plot Area:</b>     | N/A               |
| <b>Furnishing:</b>    | Partly Furnished  |

|                         |                  |
|-------------------------|------------------|
| <b>Rates:</b>           | £140 Per Quarter |
| <b>Service Charges:</b> | TBC              |
| <b>Price per sqm:</b>   | £5,252.10        |