

SOU737
Available

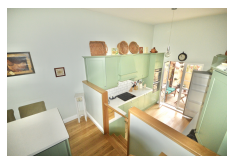
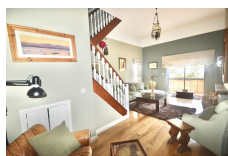
OLD BRYMPTON CLOSE

£920,000/ £3,400 pcm



FEATURES

- 4 Bedrooms
- 2 Bathrooms
- New AC in the upstairs level
- Fully Furnished
- Private Parking
- Private Garden



Nestled within the esteemed South District, this three-level townhouse resides in an exclusive development. Descending to the right on a split level, you'll find a cozy lounge featuring a functional fireplace and expansive glass doors leading to a west-facing terrace. On the left split level, a dining area seamlessly integrates with a fully fitted and equipped kitchen, also opening onto the terrace. Ascending to the second level reveals two bedrooms, a family bathroom adorned with ceramic tiles, and a lock-up garage presently utilized as a storeroom and study, offering convenient direct access to the property. The third level hosts the master bedroom with an en-suite bathroom and a covered terrace which is now being converted to a 4th bedroom, boasting ample storage space and a loft area. Convenient private parking is located just outside the doorstep, making this property a must-see.

Interior Size: 135m²
Exterior Size: 25m²
Plot Area: N/A
Furnishing: Fully Furnished

Rates: TBC
Service Charges: £80 Per Month
Price per sqm: £6,237.29