



DEV041
Available

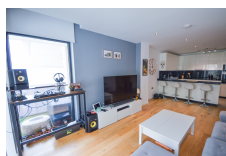
CLEMENCE SUITES

£480,000



FEATURES

- 1 Bedrooms
- 1 Bathrooms
- Gym
- Underfloor heating (bathrooms)
- Terrace
- South Orientation
- Indoor swimming pool
- Fully Furnished
- Communal Pool
- Private Parking
- Private Terrace Garden



Exclusive to BMI – Lovely One-Bedroom Apartment at Clemence Suites BMI are delighted to offer for sale this bright, spacious one-bedroom, one-bathroom apartment, located on the 7th floor of the prestigious Clemence Suites development. Benefitting from a desirable south-facing aspect, the apartment enjoys fantastic views and afternoon sunshine from its generous 9m² private balcony. This well-presented property offers ample storage throughout and includes a secure private parking space. Positioned on a high floor, it enjoys excellent natural light, creating a warm and inviting living environment. Clemence Suites is a stylish modern development of deluxe apartments and penthouses, intelligently designed to offer practical yet luxurious living. Ideally situated close to Gibraltar's beaches and within approximately 15 minutes' walking distance of the town centre, it represents both a superb residence and an excellent investment opportunity. Specifications Include: Solid entrance doors with hardwood frames, brushed stainless steel ironmongery and security locks Oak engineered wood flooring with white lacquered skirting to living areas, corridors and bedrooms Quality oak veneer internal doors with white lacquered frames and brushed stainless steel finishes Generous fitted wardrobes with interior LED lighting in the bedroom Double-glazed solar windows and lockable terrace doors Reverse-cycle air-conditioning Amenities: Free access to fully equipped gym with free weights and state-of-the-art cardio machines Free indoor swimming pool access Secure covered parking with direct building access Elegant central lobby with ...

Interior Size: 60m²
Exterior Size: 9m²
Plot Area: N/A
Furnishing: Fully Furnished

Rates: TBC
Service Charges: £121.87 Per Month
Price per sqm: £7,441.86