



EPL169
Available

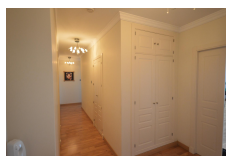
EUROPLAZA

£1,300,000



FEATURES

- 4 Bedrooms
- 2 Bathrooms
- Fully Furnished
- Communal Pool
- Private Parking
- Communal Garden



This beautifully presented and generously spacious family apartment, located on a mid-level floor in the sought-after Europlaza development, is in impeccable decorative condition throughout. Offering four well-appointed bedrooms, each featuring fitted wardrobes, with the master bedroom benefiting from a luxurious walk-in wardrobe, this residence combines comfort and elegance. Spanning 143 square meters of stylish living space, the apartment also boasts a 20 square meter private terrace with breathtaking views, perfect for outdoor relaxation and entertaining. The modern, fully fitted kitchen and integrated air-conditioning system provide both convenience and comfort. Additionally, the property comes with an allocated parking space and is sold fully furnished, making it move-in ready. This is a remarkable opportunity not to be missed—viewing is highly recommended.

Interior Size:	143m ²
Exterior Size:	20m ²
Plot Area:	N/A
Furnishing:	Fully Furnished

Ownership:	Leasehold
Rates:	£287.5 Per Quarter
Service Charges:	£308.33 Per Month
Price per sqm:	£8,496.73