



SOU701
Available

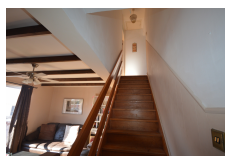
ROSIA DALE

£1,250 pcm



FEATURES

- 2 Bedrooms
- 1 Bathrooms
- Fully Furnished
- Permit Parking - Not Allocated
- Communal Garden



Charming Two-Bedroom Maisonette in the South District Located in the popular and family-friendly South District, this well-maintained two-bedroom, one-bathroom maisonette is positioned in the middle tier of this welcoming residential development. The property is in good condition throughout and features large windows, offering a very bright and welcoming area. A private balcony adds to the appeal, providing a pleasant outdoor space to relax. Residents benefit from excellent communal facilities, including a secure bike shed, a children's playground, and a clubhouse that can be pre-booked for private functions. The estate also offers communal private parking, adding convenience to everyday living. Strict no pets policy. Available from 14th June 2025. Viewing is highly recommended – contact us on +350 200 51010 or info@bmigroup.gi to arrange yours today!

Interior Size: 84m²
Exterior Size: N/A
Plot Area: N/A
Furnishing: Fully Furnished

Ownership: Leasehold
Rates: TBC
Service Charges: TBC
Price per sqm: £0