



SOU796
Available

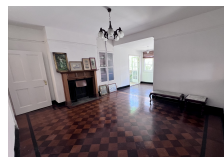
SCUD HILL

£625,000



FEATURES

- 3 Bedrooms
- 2 Bathrooms
- Fireplace
- High ceilings
- Partly Furnished
- Parking Facility



This remarkable three-bedroom penthouse apartment in the sunny South District is a true gem. Nestled near St. Joseph's School and the upcoming Eroski supermarket, it promises convenience and comfort. Boasting abundant charm, the residence showcases three spacious bedrooms with picturesque bay views, a generously sized fully equipped kitchen with two pantries, a bathroom, separate cloakroom, and a welcoming living/dining area opening onto a terrace with stunning vistas of the Rock and sea. Highlights include three functional fireplaces and original cork flooring. Situated within a small building, the property boasts minimal overheads, just two neighboring units, a communal patio, and residential car parking space. For a personal viewing experience, don't hesitate to reach out to us at BMI Group.

Interior Size:	115m ²	Rates:	£140 Per Quarter
Exterior Size:	8m ²	Service Charges:	TBC
Plot Area:	N/A	Price per sqm:	£5,252.10
Furnishing:	Partly Furnished		