



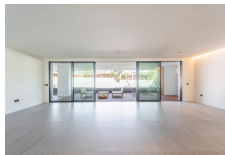
SOTOGRADE

1,700,000€



FEATURES

- 4 Bedrooms
- 4 Bathrooms
- Communal Pool
- Communal Car Park
- Communal Garden



Presenting an exceptional 4-bedroom resale opportunity in the recently finished Village Verde development. Indulge in the epitome of contemporary living with this professionally designed apartment that comprises 4 bedrooms and 4 bathrooms. Meticulously curated to meet the highest standards, the interiors showcase premium materials and finishes that enhance the apartment's overall aesthetic. Spanning across 265m², this property offers a generous floor area complemented by an additional 135m² of terrace space. Notably, there are two terraces that extend the entire length of the apartment. One terrace enjoys an east-facing orientation, while the other captures the sun from the west, ensuring you bask in sunlight throughout the day. Upon entry, you'll be greeted by a spacious open-plan layout. The modern-style kitchen seamlessly integrates with the dining area, elegantly separated by stylish wooden partitions. Flowing from the dining area, the expansive living room is adorned with large sliding doors that lead out to the patio. The patio itself is thoughtfully divided into a wooden deck section and a garden area that could be transformed into a lush lawn. This design brilliantly welcomes natural light from both sides, creating a bright and inviting atmosphere that lasts from morning until night. The apartment's clever layout ensures a clear distinction between the living and sleeping areas. A sizable pocket door effortlessly slides away, revealing a corridor that grants access to the bedrooms. Divided between the east and west sides, all bedrooms are en-suite, boasting sleek and modern bathrooms. At the end of the corridor, the master bedroom stands as a testament to luxury, featuring stunning fitted wardrobes and a truly unique and stylish bathroom. The master bedroom, like the others, opens gracefully onto the outside terrace spaces, offering panoramic views of the surroundings. In addition to the splendid living spaces, the property includes two ...

Interior Size:	262m ²	Rates:	TBC
Exterior Size:	135m ²	Service Charges:	TBC
Plot Area:	341m ²	Price per sqm:	£5,159.33
Furnishing:	Unfurnished		