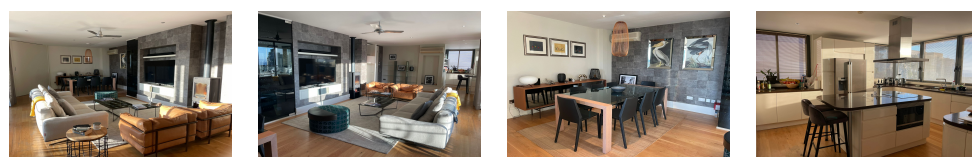


SOU748
Available

SOUTH DISTRICT

£2,250,000



FEATURES

- 4 Bedrooms
- 2 Bathrooms
- Communal pool
- Rock & Sea Views
- Air-conditioning
- 2 Balconys
- Partly Furnished
- Communal Pool
- Private Parking
- Communal Garden

Penthouse apartment at the exclusive Edward House, The Cliftons development, located in the upper south district. The property has a stunning south westerly aspect with stunning views to the adjacent Rock face and south toward the strait of Gibraltar. Direct and exclusive access to the apartment is provided via a private lift only servicing two apartments of the three that are housed within Edward House. This penthouse is of approx 190sqm internally and includes three very large bedrooms and a single fourth bedroom. The master suite measures approx 25sqm with an additional 10sqm luxurious en-suite and access to a private terrace. A superb and spacious open-plan living / dining and kitchen area of approx 70sqm features, with direct access to an open / close terrace and spectacular natural light throughout thanks to the almost full glass frontage of the apartment. This unique top floor property was built by Taylor Woodrow as part of The Cliftons refurbishment of the Naval Hospital and sits on the original roof of the historic Edward House. The estate provides for wonderful landscaped areas, communal outdoor pool and Gymnasium / Sauna facility all within a very low density residential development of only 35 properties (approx). Private parking included.

Interior Size:	185m ²	Ownership:	Leasehold
Exterior Size:	30m ²	Rates:	TBC
Plot Area:	N/A	Service Charges:	TBC
Furnishing:	Partly Furnished	Price per sqm:	£11,250.00

BMI Group Limited, Unit 7 Portland House, Glacis Road, P.O. Box 469, Gibraltar

✉ info@bmigroup.gi ☎ (+350) 200 51010

www.bmigroup.gi