



SOU788
Available

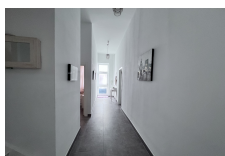
SOUTH DISTRICT

£565,000



FEATURES

- 2 Bedrooms
- 1 Bathrooms
- Feature fireplace
- Ceramic flooring on the downstairs
- Laminate wood effect on the upstairs
- Partly Furnished
- Zone Parking Permit



Don't miss out on this incredible opportunity! A stunning 2-bed, 1-bath duplex apartment in the peaceful South District, within a private family estate. Refurbished to a high standard, it's move-in ready with approximately 60m² of living space on each level. The first level features a fully fitted kitchen, 1 bedroom, living/dining room, family bathroom, and a utility cupboard. Upstairs, the unique master bedroom boasts a walk-in wardrobe with an open plan design, overlooking the living/dining room downstairs. Ample storage, partly furnished, and free from a 3-year residency restriction. Highly recommended viewing!

Interior Size:	121m ²	Rates:	£46 Per Quarter
Exterior Size:	N/A	Service Charges:	£100 Per Month
Plot Area:	N/A	Price per sqm:	£4,669.42
Furnishing:	Partly Furnished		