



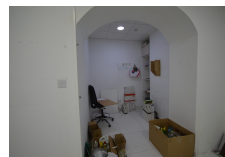
COMM289
Let

TOWN

£1,300 pcm



FEATURES



New to the market - Lease for Assignment (ends 1.10.29) or option for a new lease is available. Prime retail/commercial unit of approx. 28.75m² available for rental - centrally located just off Main Street. Ideal premises for any new business (no food related business). Available for immediate occupation. All applications are subject to the Landlords approval. Viewing is recommended.

Interior Size:	29m ²	Rates:	£109.67 Per Month
Exterior Size:	N/A	Service Charges:	TBC
Plot Area:	N/A	Price per sqm:	£0
Furnishing:	Unfurnished		

BMI Group Limited, Unit 7 Portland House, Glacis Road, P.O. Box 469, Gibraltar

✉ info@bmigroup.gi ☎ (+350) 200 51010

www.bmigroup.gi