



COMM390  
Available

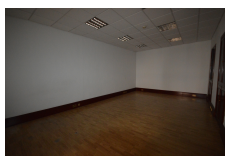
## MAIN STREET

£1,500 pcm



### FEATURES

- Laminate flooring



Office space for rent- zone A Main-street. Office area of approx 90m<sup>2</sup> with conference rooms/private offices, kitchenette and bathrooms. Features glass and wood panelling and lots of natural light. Viewing is recommended.

**Interior Size:** 90m<sup>2</sup>  
**Exterior Size:** N/A  
**Plot Area:** N/A  
**Furnishing:** Unfurnished

**Rates:** £1326 Per Quarter  
**Service Charges:** TBC  
**Price per sqm:** £0