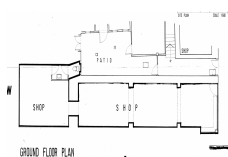


COMM444
Available

MAIN STREET

£3,600 pcm



Shop lease for sale – commercial unit of 88m² providing prime site location on the busy Main Street surrounded by other businesses. Benefits from a large footfall and a good condition. Great business opportunity! A new owner is presented with several growth possibilities which, if implemented, could increase yearly takings. Viewing is recommended.

Interior Size:	88m ²	Rates:	£1105 Per Quarter
Exterior Size:	N/A	Service Charges:	TBC
Plot Area:	N/A	Price per sqm:	£0
Furnishing:	Partly Furnished		