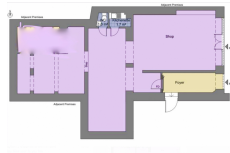




COMM056
Available

MAIN STREET

£4,500 pcm



FEATURES

- WC

Smart and spacious retail premises of approximately 100m² located on the upper end of Main Street offering good passing trade business. Fitted to a high standard throughout with glass display cabinets internally, wooden flooring, front shop windows, façade in marble and air-conditioning. Rent includes service charges and rates. A deposit of 3 months will be required. Viewing is recommended.

Interior Size:	100m ²	Rates:	TBC
Exterior Size:	N/A	Service Charges:	TBC
Plot Area:	N/A	Price per sqm:	£0
Furnishing:	Unfurnished		