



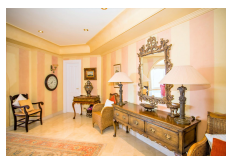
SOTOGRANDE

1,750,000€



FEATURES

- 4 Bedrooms
- 4 Bathrooms
- Communal Car Park



An exceptional 4-bedroom penthouse in the Puerto Deportivo of Sotogrande. Bathed in natural light, it offers expansive views of Sotogrande Puerto, the marina, and the Rock of Gibraltar across the sea. Originally two apartments and a studio seamlessly merged, this residence features multiple living spaces and terraces, providing a comfortable setting for either a large group or a couple seeking ample space for guests in the main living area. Situated in possibly the best location within the port, this commanding corner unit boasts a front-row position, offering unobstructed views. Surrounded by the port's shops and restaurants, it's a stone's throw from the beach and a short bike ride away from the tennis clubs. The price includes two parking spaces.

Interior Size:	480m ²	Rates:	TBC
Exterior Size:	N/A	Service Charges:	TBC
Plot Area:	N/A	Price per sqm:	£3,645.83