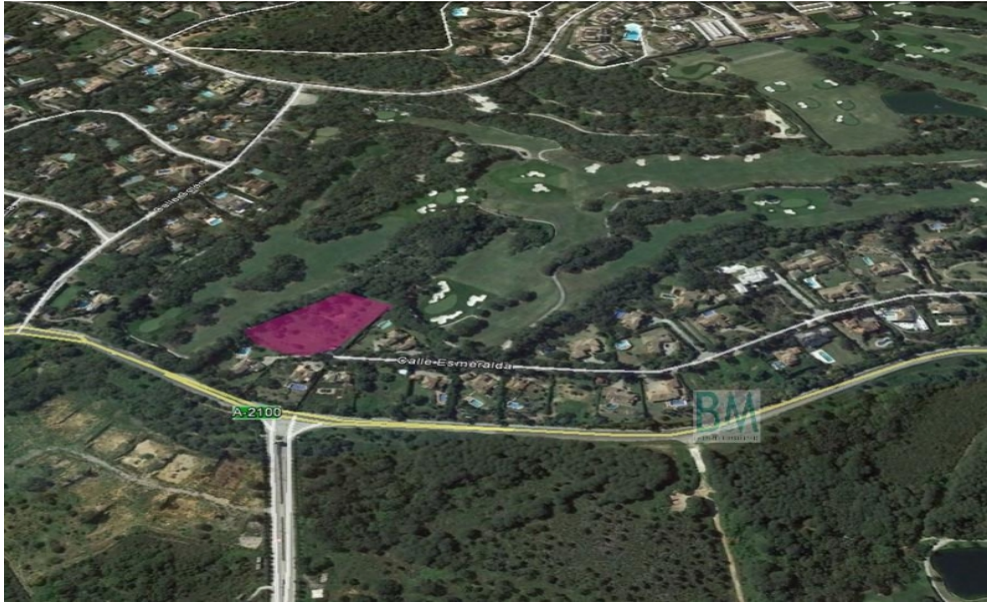




240-01477P
Available

SOTOGRADE

2,400,000€



FEATURES

- Studio Bedrooms
- 0 Bathrooms
- Front Line Golf
- Close To Port
- Close To Schools
- Garden View
- Close To Sea Beach



Sotogrande property - Sotogrande Plot for sale (E - zone)- amazing large plot on the Valderrama golf course The plot price exclude 21% iva Price per m2 is 160€ build size aprox 1200m2

Interior Size:	N/A	Rates:	TBC
Exterior Size:	N/A	Service Charges:	TBC
Plot Area:	8055m ²	Price per sqm:	£0

BMI Group Limited, Unit 7 Portland House, Glacis Road, P.O. Box 469, Gibraltar

✉ info@bmigroup.gi ☎ (+350) 200 51010

www.bmigroup.gi