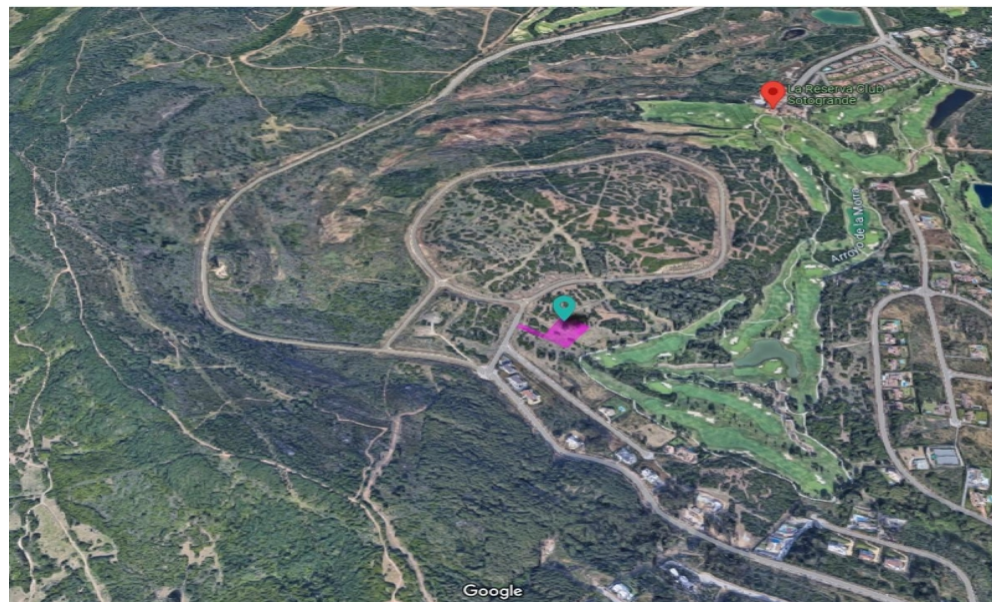




SOTOGRADE

1,035,000€



With a total area of 3,092 m², this plot provides ample space to create your ideal residence, aimed to be complete with state-of-the-art amenities. The estate's extensive size allows the future homeowner to forge an oasis amid hills of greenery, but with direct and clear views of the seaside. In addition to its prime location and extensive size, this exceptional plot of land in Sotograde is also intended to feature five luxurious bedrooms, each equipped with its own bathroom. The bedrooms will provide ample space for relaxation and privacy, making this the perfect home for families or anyone who enjoys hosting guests. With its prime location, extensive size, and exceptional potential, this plot is truly one-of-a-kind. So why wait? Contact us today to learn more and start planning your dream home in Sotograde! - Classification: Plot for residential use - Building allowance: - Maximum site coverage: 25% - 30% - Maximum Height: 2 storeys = 6,50 metres. A third storey is permitted, provided this does not exceed 30 % coverage of the second storey provided the total height/elevation of the dwelling does not exceed 9,50 metres. - Distance to golf course: 15 metres or more - Ancillary areas built to provide vehicle parking: Not included - Commission: 5%

Interior Size: N/A
Exterior Size: N/A
Plot Area: 3092m²

Rates: TBC
Service Charges: TBC
Price per sqm: £0