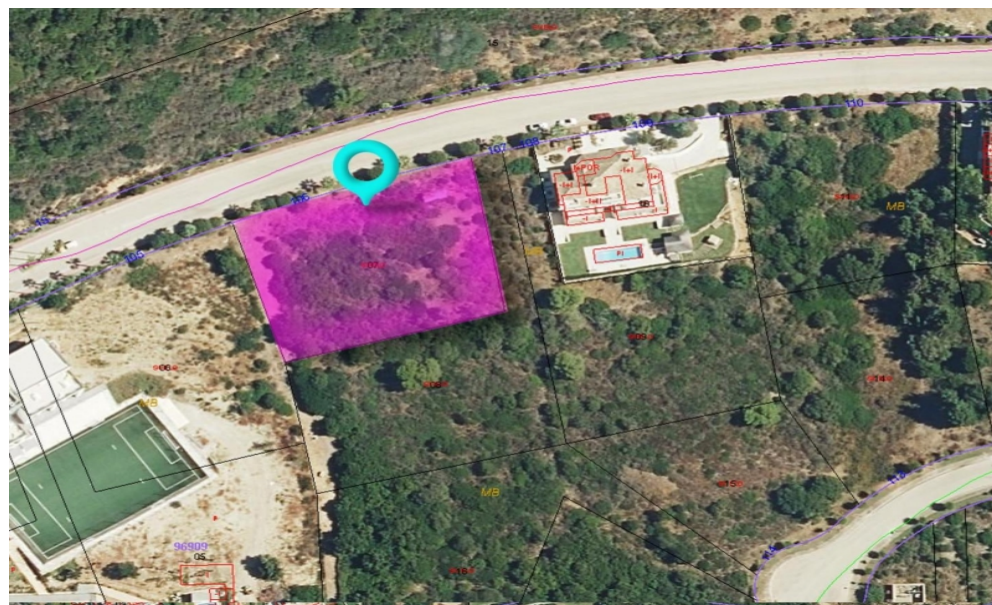


240-02810P  
Available

## SOTOGRADE

**1,150,000€**



### FEATURES

- Studio Bedrooms
- 0 Bathrooms
- Close To Schools
- Sea views
- Country View
- Gated Community
- Security Service 24h
- Garden View
- Close To Golf
- Panoramic views

We are delighted to present this exceptional residential plot for sale in La Reserva de Sotogrande, offering a rare opportunity to build a bespoke luxury villa in one of Sotogrande's most sought-after areas. This south-east facing plot enjoys an elevated position with beautiful sea and open countryside views, creating a bright and tranquil setting for a high-end family home. Located within La Reserva de Sotogrande, the plot benefits from privacy, security, and proximity to the international school, making it ideal for both permanent living and holiday use. The elevated position enhances the views while maintaining a peaceful, exclusive atmosphere. The generous 2,929 m<sup>2</sup> plot allows for a substantial villa design, with a building allowance of approximately 33% (circa 1,084 m<sup>2</sup>). Construction is permitted over two storeys, with the option of a third storey provided it does not exceed 30% of the second-floor footprint and the total height remains within 9.5 metres. A minimum built area of 150 m<sup>2</sup> ensures flexibility for a spacious and well-planned luxury villa. Set back 6 metres from the street, the plot offers excellent privacy. While there are no golf views, several of Sotogrande's renowned golf courses are located nearby, reinforcing the area's appeal as a prime location for luxury living and investment. This is an outstanding opportunity to acquire land in La Reserva de Sotogrande, ideal for buyers looking for a premium plot for sale in Sotogrande with sea views, space, and strong long-term value. ? Location: La Reserva de Sotogrande ? Classification: Residential plot / land for sale ? Plot size: 2,929 m<sup>2</sup> ? Price: €1,150,000 ? Price per m<sup>2</sup>: approx. €393 ? Orientation: South-east facing ? Views: Sea and open countryside ? Elevated plot with privacy ? Close to Sotogrande International School ? Building allowance: approx. 33% (c. 1,084 m<sup>2</sup>) ? Maximum height: 2 storeys + optional 3rd storey (subject to limits) ...

<b>Interior Size:</b>	N/A	<b>Rates:</b>	TBC
<b>Exterior Size:</b>	N/A	<b>Service Charges:</b>	TBC
<b>Plot Area:</b>	2839m <sup>2</sup>	<b>Price per sqm:</b>	£0

BMI Group Limited, Unit 7 Portland House, Glacis Road, P.O. Box 469, Gibraltar

✉ info@bmigroup.gi ☎ (+350) 200 51010

[www.bmigroup.gi](http://www.bmigroup.gi)