



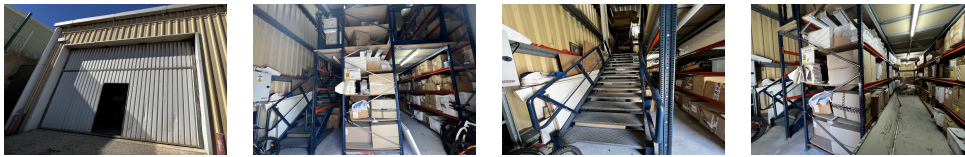
COMM484  
Available

## SOUTH DISTRICT

£2,500 pcm



### FEATURES



To Let - Lathbury Barracks' storage unit is a secure and spacious facility designed for storing various items. It offers multiple shelving to keep your belongings organised. Whether you need to store personal items, equipment, or supplies, the storage unit at Lathbury Barracks provides a reliable solution to meet your storage needs. Ground floor approx. 51m<sup>2</sup> Mezzanine level approx. 43m<sup>2</sup> (holds maximum weight 250kg) Electricity connected No water supply but can be connected Minimum term 2 years Service Charges & Rates included with the rent Communal Ladies & Gents WC Alarm system For further information please contact us directly.

<b>Interior Size:</b>	94m <sup>2</sup>	<b>Ownership:</b>	Leasehold
<b>Exterior Size:</b>	N/A	<b>Rates:</b>	TBC
<b>Plot Area:</b>	N/A	<b>Service Charges:</b>	TBC
<b>Furnishing:</b>	Unfurnished	<b>Price per sqm:</b>	£0