

SOU737
Under Offer

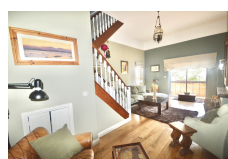
OLD BRYMPTON CLOSE

£920,000



FEATURES

- 3 Bedrooms
- 2 Bathrooms
- Fully Furnished
- Private Parking
- Private Garden



Three level town house set in a very select development in the renowned South District area. Down right on split level, there is a lounge area with working fireplace, big glass door windows leading to west facing terrace. Left split level, there is a dining area and kitchen (fully fitted and equipped), leading to west facing terrace. Up to 2nd level, there are 2 bedrooms, family bathroom fitted in ceramic tiles and lock-up garage (currently used as storeroom and study) with direct access to property. Up 3rd level, is the master bedroom with en-suite and covered terrace, used as laundry/drying area. Provides plenty of storage space and loft area. Private parking space right outside the door step. Viewing is highly recommended.

Interior Size:	135m ²	Rates:	TBC
Exterior Size:	25m ²	Service Charges:	£80 Per Month
Plot Area:	N/A	Price per sqm:	£6,237.29
Furnishing:	Fully Furnished		

BMI Group Limited, Unit 7 Portland House, Glacis Road, P.O. Box 469, Gibraltar

✉ info@bmigroup.gi ☎ (+350) 200 51010

www.bmigroup.gi