



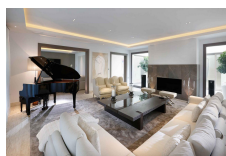
## SOTOGRANDE

**7,850,000€**



### FEATURES

- 6 Bedrooms
- 8 Bathrooms
- Fully Furnished
- Private Pool
- Private Parking
- Private Garden



This property is one of the most exquisite and highly specified in the exclusive Sotogrande estate, fusing classic Spanish architecture with contemporary interior design. Located in the hills of Sotogrande Alto, Villa Oasis is a sophisticated six bedroom luxury home sitting within beautifully landscaped front and rear gardens, perfect as a vacation retreat or for year round living. Boasting high end finishes and elegant spaces, this Mediterranean style villa is awash with natural light and features an open and modern floor plan spread over three levels, surrounding a double height central atrium with orange trees and a water feature. The main floor comprises an entrance courtyard, extensive indoor and outdoor living areas overlooking the front garden and infinity edge pool, a bespoke Gaggenau fitted kitchen with vaulted ceiling and breakfast table, a separate dining room and two generous guest suites both with rainfall showers. The first floor offers a spacious master suite with private lounge area, luxurious ensuite bathroom and walk-in dressing room, as well as a vast panoramic terrace with Jacuzzi. This floor also includes two additional premium guest suites, each with their own dressing room and bathroom. The expansive lower level reveals an area dedicated to wellness and relaxation, featuring a resort-style spa with 13 metre heated pool, steam room, sauna and chilled plunge pool, as well as a state of the art 4K cinema, temperature-controlled wine cellar, fully equipped gym and fitness studio, a business centre and an additional guest suite. Built on a flat double plot, the rear garden has potential for further development.

**Interior Size:** 1600m<sup>2</sup>  
**Exterior Size:** 133m<sup>2</sup>  
**Plot Area:** 5148m<sup>2</sup>  
**Furnishing:** Fully Furnished

**Rates:** TBC  
**Service Charges:** TBC  
**Price per sqm:** £4,710.47