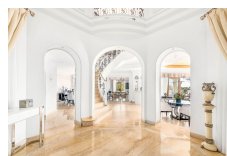
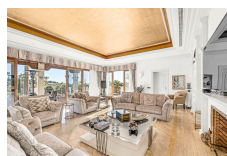




## SOTOGRADE

13,950,000€



This luxurious Mediterranean residence boasts 16 bedrooms across the Main House, Guesthouse, and Staff House, nestled in the prestigious area of El Paraiso Alto, Benahavis, amidst Costa del Sol's finest golf courses. The Main Villa: Spread across three floors with a separate entrance to the lower level, the main house features an impressive entrance hall leading to a spacious and luminous living room seamlessly connected to a vast terrace overlooking the heated swimming pool. The living and dining areas exude elegance with high ceilings, while an open relaxation space with a bar and a generously-sized kitchen offer functionality and style. Additionally, a first bedroom with an en-suite bathroom and dressing room opens to the expansive terrace. The top floor houses four more bedrooms, including two master bedroom suites with private bathrooms and dressing areas, each with its own private terrace offering stunning garden, mountain, and sea views. The Guesthouse: The secondary villa, acting as a guesthouse, spans three floors. The main floor features two bedrooms with en-suite bathrooms, private dressing rooms, and terraces, while the lower level hosts the living and dining areas, along with a spa room. The top floor boasts a master bedroom with a spacious bathroom, dressing room, and a chill-out space, complemented by a sizable terrace providing panoramic vistas. The Annex: Completing this extraordinary estate is an annex serving as staff apartments, comprising three units located both on the lower and upper parts of the property. Surrounded by lush tropical gardens with expansive lawns, a large private swimming pool with ample terracing and a sun deck, private garage, and driveway parking, this property offers a rare opportunity to acquire an impressive estate in a secure and private setting, catering to the most discerning clientele.

**Interior Size:** 1337m<sup>2</sup>  
**Exterior Size:** 500m<sup>2</sup>  
**Plot Area:** 7100m<sup>2</sup>

**Rates:** TBC  
**Service Charges:** TBC  
**Price per sqm:** £8,790.17