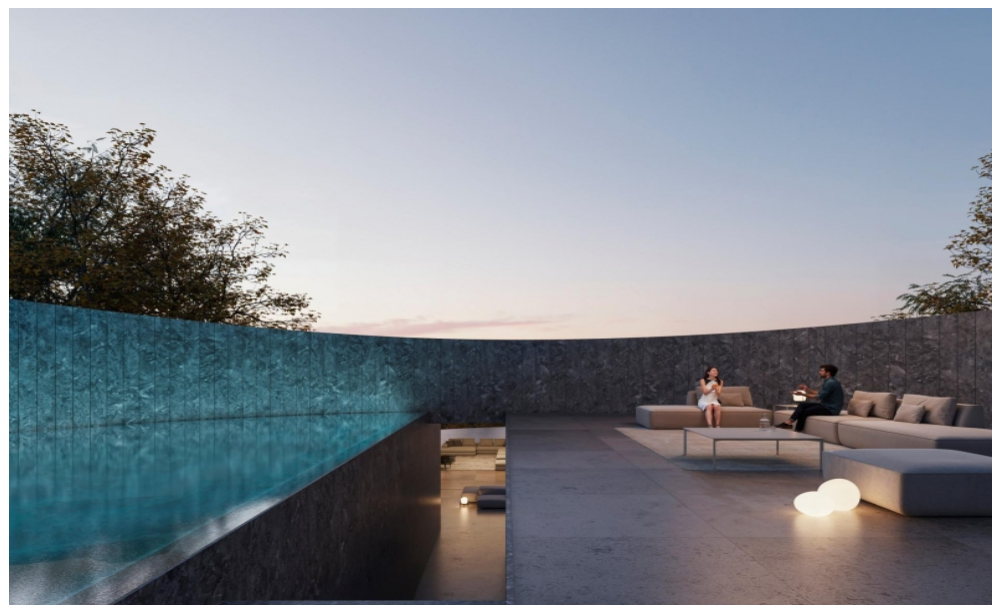




## SOTOGRANDE

12,000,000€



### FEATURES

- 6 Bedrooms
- 7 Bathrooms
- Private Pool
- Private Parking
- Private Garden



Welcome to Villa Noon, the first zero consumption villa in Sotogrande, where luxury meets sustainability. Nestled in the prestigious La Reserva de Sotogrande, this architectural masterpiece by Fran Silvestre Arquitectos redefines sustainable luxury living. Villa Noon is 100% energy and water self-sufficient, setting a new benchmark in eco-friendly living. With six elegant bedroom suites, each featuring en-suite bathrooms, this villa combines sophistication with cutting-edge green technology. Enjoy the benefits of a state-of-the-art geothermal system, solar panels, and advanced domotics, ensuring a zero-energy lifestyle without sacrificing luxury. The main living area boasts a spacious open-plan kitchen, dining, and living room, seamlessly connected to charming exterior patios and terraces with breathtaking sea views. Indoor and outdoor living spaces blend effortlessly, enhancing the villa's eco-friendly appeal. Indulge in the villa's wellness area, complete with an indoor pool, sauna, gym, and Turkish bath. The outdoor space is equally impressive, featuring a stunning swimming pool, water mirror, and landscaped gardens designed for minimal water consumption. Villa Noon offers unparalleled privacy and comfort with two distinct living areas connected by beautifully landscaped gardens and communal outdoor spaces. High ceilings, expansive windows, and modern architectural details create a bright and airy atmosphere throughout the property. Experience the pinnacle of luxurious and sustainable living in Sotogrande. Villa Noon provides top-notch security, advanced technology, and an exclusive living experience, making it a one-of-a-kind property in the area. For more information on Villa Noon and to explore Sotogrande's finest properties, contact BMSotogrande Sales today.

Interior Size:	2757m <sup>2</sup>	Rates:	TBC
Exterior Size:	1215m <sup>2</sup>	Service Charges:	TBC
Plot Area:	4502m <sup>2</sup>	Price per sqm:	£3,566.65