



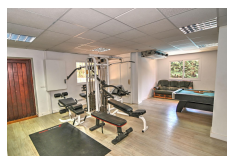
## SOTOGRANDE

**1,450,000€**



### FEATURES

- 5 Bedrooms
- 4 Bathrooms
- Private Pool
- Private Parking
- Private Garden



This 5-bedroom villa, in the heart of the exclusive Sotogrande B Zone. Designed for those who appreciate sophistication, comfort, and the beauty of the Mediterranean lifestyle, this home offers everything you need for a private sanctuary or a perfect family retreat. Why Choose This Stunning Sotogrande Villa? ? Prime Location – Situated in the prestigious Sotogrande B Zone, just minutes from world-class golf courses, Sotogrande Marina, and golden sandy beaches. ? Spacious & Stylish – This villa features 5 beautifully appointed bedrooms and 4 modern bathrooms, providing ample space for family and guests. ? Elegant Living Spaces – The bright, open-plan living and dining area flows seamlessly to a wraparound terrace, offering stunning views of the lush garden and private pool. ? Gourmet Kitchen – A sleek, fully equipped kitchen with a breakfast area and direct access to a sunlit patio, perfect for al fresco dining. ? Private Master Suite – The upper-level master bedroom boasts a luxurious en-suite, a private terrace with panoramic views, and a serene ambiance for ultimate relaxation. ? Entertainment & Leisure – The lower level is designed for fun and relaxation, featuring a spacious game room with a pool table and a cozy family lounge. ? Outdoor Oasis – Enjoy year-round sunshine with a covered terrace by the pool, ideal for barbecues, social gatherings, or simply unwinding in your private paradise. Premium Features & Amenities: ? Central heating & air conditioning (hot/cold)? Marble flooring throughout? Fully equipped gym? High-tech alarm system for security Your Dream Home Awaits! This is your opportunity to own a luxurious villa in one of the most sought-after locations in Sotogrande. Whether you're a golf enthusiast, a nature lover, or simply looking for a sophisticated coastal lifestyle, this home has it all. Contact us today

**Interior Size:** 500m<sup>2</sup>  
**Exterior Size:** N/A  
**Plot Area:** 1000m<sup>2</sup>

**Rates:** TBC  
**Service Charges:** TBC  
**Price per sqm:** £2,900.00