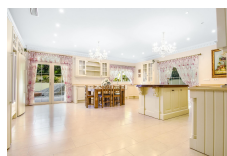


240-02828P
Available

SOTOGRADE

15,000,000€



A decade in the making and crafted to the highest imaginable standards, this extraordinary mansion in Sotograde is more than a residence — it is a true work of art. Combining palatial grandeur with bespoke design, this one-of-a-kind estate offers an unparalleled lifestyle in one of southern Europe's most prestigious private enclaves. A magnificent entrance hall welcomes you with a spectacular curved marble staircase, setting the tone for the elegance that unfolds throughout the home. A private lift connects all levels, ensuring comfort and accessibility. The upper floor hosts two luxurious en-suite bedrooms, including an opulent master suite adorned with intricate hand-painted wall and ceiling details, an exquisitely designed bathroom, and a grand dressing room worthy of a Royal residence. Set within the privacy and tranquillity of Sotograde, this palatial villa is distributed over three levels, including a semi-basement, and offers a total of six en-suite bedrooms. The main living spaces include an elegant formal living room, dining room, private study, cinema room, and a spacious gourmet kitchen with dining area. An additional catering kitchen with pantry and a separate laundry room ensure seamless entertaining on all levels. The semi-basement level reveals an extraordinary entertainment sanctuary. The Egyptian-inspired lounge, bar, and dining bar are adorned with hand-painted murals and ornate golden statues, creating a setting of pure theatrical splendour. Two additional guest suites on this level continue the refined Egyptian theme, offering a fully immersive design experience. A modern gym with changing facilities completes this floor. From the Egyptian lounge, step into a breathtaking private theatre — a faithful replica of Her Majesty's Theatre in London — featuring VIP side boxes and seating for up to 50 guests. The stage is framed by nine hand-painted canvases, prepared for a performance of Phantom of the Opera, a tribute to the ...

FEATURES

- 6 Bedrooms
- 6 Bathrooms
- Private Terrace
- Living Room
- Study Room
- Close To Schools
- Sea Views
- Country View
- Automatic Irrigation System
- Home Automation System
- Laundry Room
- Covered Terrace
- Electric Blinds
- Lift
- Garden View
- Pool View
- Panoramic views
- Mount In Side
- Cinema Room
- Airconditioning
- Partly Furnished
- Utility Room
- Fire Place
- Marble Floors
- Close To Golf
- Basement
- Game Room
- Glass Doors
- Guest Room
- Separate Dining Room
- Storage Room
- Gym
- Bar
- Balcony
- Security
- Barbecue
- Excellent Condition
- Barbecue
- Partly Furnished
- Private Pool
- Private Parking
- Private Garden

Interior Size: 1238m²
Exterior Size: N/A
Plot Area: 3099m²
Furnishing: Partly Furnished

Rates: TBC
Service Charges: TBC
Price per sqm: £12,116.32

BMI Group Limited, Unit 7 Portland House, Glacis Road, P.O. Box 469, Gibraltar

✉ info@bmigroup.gi ☎ (+350) 200 51010

www.bmigroup.gi